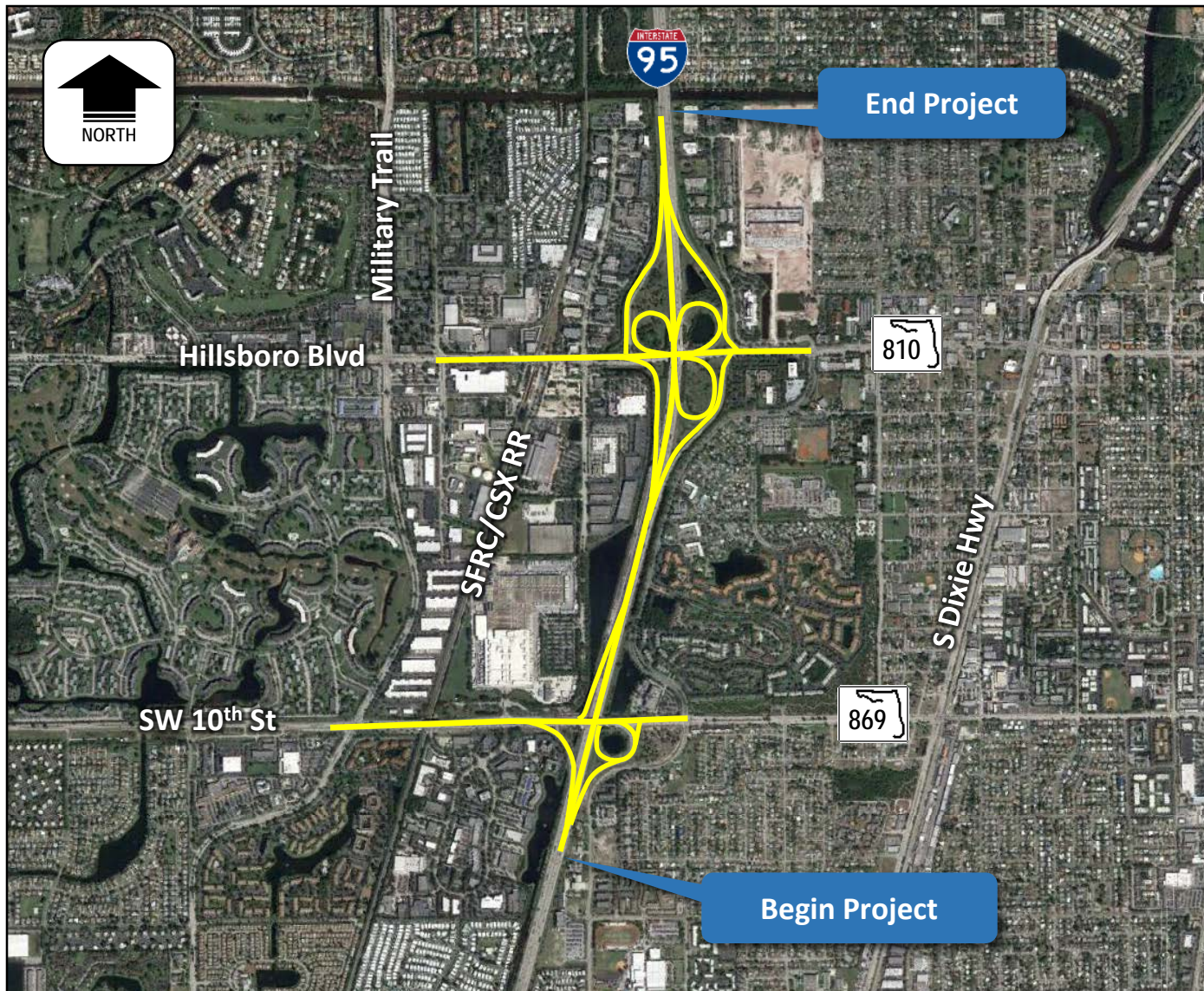




Project Development and Environment (PD&E) Study SR 9/I-95 from SW 10th Street to Hillsboro Boulevard

Financial Management No. 436964-1-22-01

ETDM No. 14244



Project Location

The project extends along SR 9/I-95 from just south of the SW 10th Street interchange to just north of the Hillsboro Boulevard interchange, a distance of approximately 1.8 miles. The project also proposes improvements along both SW 10th Street from just west of Military Trail east to SW Natura Boulevard, and along Hillsboro Boulevard from Goolsby Boulevard east to SW Natura Boulevard

Project Description

The project consists of capacity, operational and safety improvements with secondary considerations for the needs of evacuation and emergency services, transportation demand, system linkage, modal interrelationships, and social demands and economic development.

What is a PD&E Study?

A Project Development and Environment (PD&E) Study is an environmental and engineering process developed by the Florida Department of Transportation (FDOT) to meet the requirements of the National Environmental Policy Act (NEPA).

Why:

- Evaluate project feasibility and potential impacts to the natural, physical, and socio-cultural environment.
- Comply with federal and state environmental laws

What:

- Perform preliminary engineering
- Evaluate alternatives to avoid, minimize, or mitigate potential impacts
- Coordinate with federal, state and local agencies
- Engage the public in project development

schedule

PUBLIC INVOLVEMENT ACTIVITY	2016		2017				2018				2019	
	3	4	1	2	3	4	1	2	3	4	1	2
Study Begin	★											
Public Kick-off Meeting			★									
Elected Official/Agency Kick-off Meeting			★									
Newsletter				★								
Alternatives Public Workshop						★						
Public Hearing										★		
Study Completed												★
Public Involvement												
Location and Design Concept Acceptance												★

public participation

FDOT has initiated a public involvement program to provide information and obtain input from concerned citizens, agencies, private groups (residential/business), and governmental entities. The overall goal of the public involvement program is to ensure that the study reflects the values and needs of the communities it is designed to benefit.

The Efficient Transportation Decision Making (ETDM) Process is Florida's procedure for reviewing qualifying transportation projects to consider potential environmental effects during the planning and project development phases of a project. This process provides stakeholders the opportunity for early input, involvement, and coordination.

The environmental review, consultation, and other actions required by applicable federal environmental laws for this project are being, or have been, carried out by FDOT pursuant to 23 U.S.C. 327 and a Memorandum of Understanding dated December 14, 2016, and executed by FHWA and FDOT.

Public participation is solicited without regard to race, color, national origin, age, sex, religion, disability or family status.

questions & comments

If you would like to obtain additional information, be added to the project mailing list, arrange a meeting, or submit written comments, please contact the FDOT project manager Mr. Anson Sonnett.

Anson Sonnett, PE
 FDOT Project Manager
 3400 West Commercial Blvd.
 Fort Lauderdale, FL 33309
 954-777-4474
 Anson.Sonnett@dot.state.fl.us