

SR 659 (Combee Road) PD&E Study from US 98 to North Crystal Lake Drive

Financial Project ID No.: 440274-1-22-01



August 2018

PD&E STUDY STARTED

The Florida Department of Transportation (FDOT) is beginning a Project Development and Environment (PD&E) study to evaluate improvements to Combee Road from US 98 to North Crystal Lake Drive. As part of this study, we will be looking at ways to improve safety for all users, including pedestrians, bicyclists, transit riders, and drivers. Improvements such as sidewalks, pedestrian crossings, bicycle lanes, turn lanes, drainage, and lighting will be considered.

A PD&E study is the process used to answer the following questions:

- What is the need for the project?
- What alternatives or options should we consider?
- What are the community and environmental impacts with the proposed improvements?
- What is the best solution?

During the PD&E study process, FDOT will develop alternatives and provide opportunities for your input.



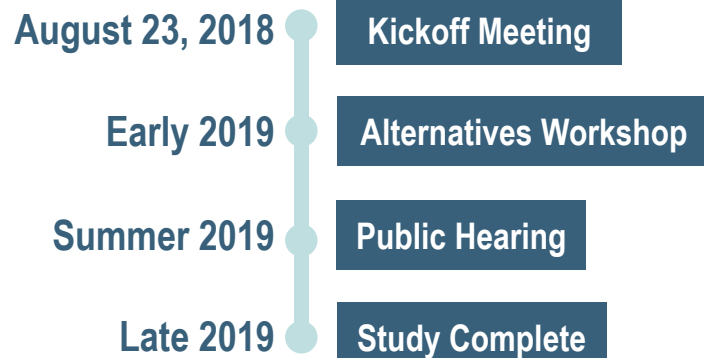
WE WANT TO HEAR FROM YOU!

Join us on August 23rd to learn more about the study and discuss how to improve Combee Road. Share your thoughts and ideas and help identify areas of the roadway that need our attention. If you cannot join us on August 23rd, then you can send your comments to the contact provided on the right, by September 4th, 2018. We look forward to your participation on August 23rd and throughout the study.



People who require special accommodations under the Americans with Disabilities Act of 1990, or who require translation services (free of charge), should contact Tammy Sutton, District One ADA Coordinator at (863) 519-2517 or by email at Tammy.Sutton@dot.state.fl.us at least seven days prior to the public kickoff meeting.

PROJECT SCHEDULE



CONTACT INFORMATION

Patrick Bateman, El
FDOT District One Project Manager



P.O. Box 1249, Bartow, FL 33813



Ph: (863) 519-2792



Email: Patrick.Bateman@dot.state.fl.us

Study website: www.swflroads.com/sr659/us98tocrystallakedr



Florida Department of Transportation
Environmental Management Office
Combee Road PD&E Study
P.O. Box 1249
Bartow, FL 33831

PUBLIC KICKOFF MEETING



Date:
August 23, 2018



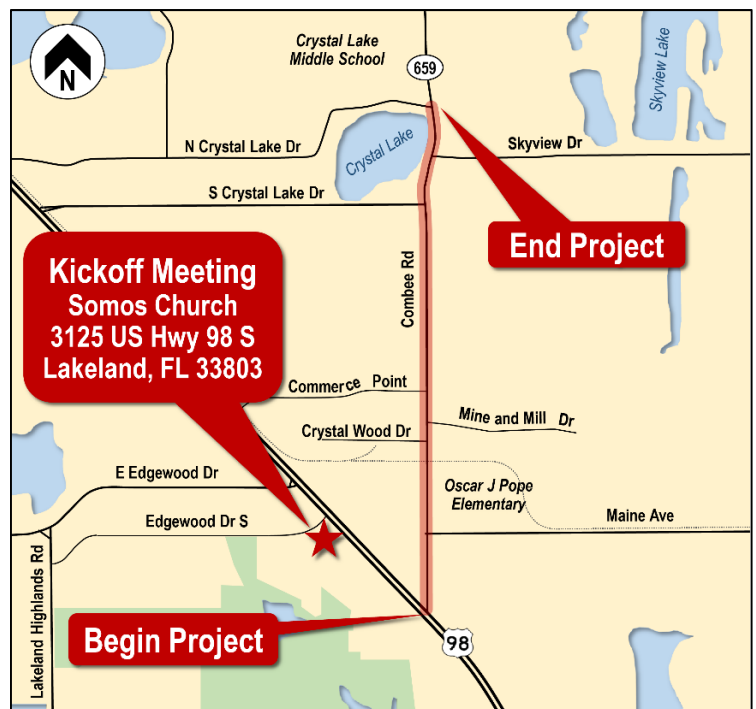
Time:
Anytime between 5:00 p.m. – 7:00 p.m.



Location:
Somos Church
3125 US Hwy. 98 S, Lakeland, FL 33803

The kickoff meeting will be conducted in an open house format with information on display. Staff from the Florida Department of Transportation (FDOT) will be available anytime between 5 p.m. and 7 p.m. to have one-on-one conversations about the project.

Public participation is solicited without regard to race, color, national origin, age, sex, religion, disability or family status. Persons wishing to express their concerns relative to FDOT compliance with Title VI may do so by contacting Cynthia Sykes, Title VI Coordinator, at (863) 519-2287 or by email at Cynthia.Sykes@dot.state.fl.us.



The environmental review, consultation, and other actions required by applicable federal environmental laws for this project are being, or have been, carried-out by FDOT pursuant to 23 U.S.C. § 327 and a Memorandum of Understanding dated December 14, 2016, and executed by FHWA and FDOT.